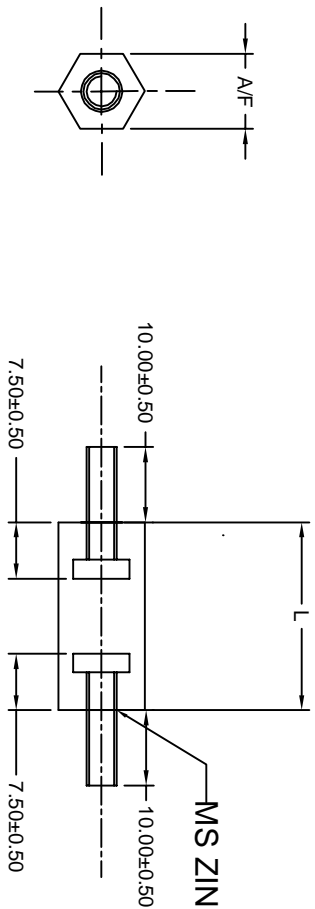


AVAILABLE SIZES

A/F	L	THREADING	PART CODE
10	20	M4	AEHS10420SS
10	25	M4	AEHS10425SS
10	30	M4	AEHS10430SS
10	35	M4	AEHS10435SS
10	40	M4	AEHS10440SS

M/S ZINK PLATED M4 SCREW.



ANAND Enterprises		TOLERANCE UNLESS OTHERWISE STATED		±0.2
HEAT TREATMENT	N/A			ANGLE +0°10'
MATERIAL	30% GF NYLON 6 BLACK	DATE	26.9.2016	UNIT MM
TITLE HEX SACPESR MOLDED WITH INSERTS HEAVY DUTY		DRG.NO.	119	QTY.
SCALE 1:1			SHEET 1 OF 1	